



Uphall Primary and ELC Newsletter

Twitter: @TEAMUphallPS

Website: <https://uphallprimary.westlothian.org.uk/>

November '19

Parent Consultations

Thank you to everyone who attended our parent/carer consultations in October. **68%** of our families attended. We hope you found the dialogue informative and have a better understanding of how you can support your child to reach their full potential. Please don't hesitate to contact your child's teacher if you were unable to attend and would like to discuss their progress. By working together we can ensure your child consistently achieves and address any concerns.

Remember this session we have our first Sharing Our Learning session on Thursday 28th November (11.00am/2.00pm). This will give you another opportunity to meet with your child and chat about their learning. You will also have a chance to look through your child's jotters and work.

Health and Safety – STAFF CAR PARK/DROP OFF & PICK UP

Parents, carers, pupils are not permitted to enter or use the staff car park. Please keep our children safe and ensure you adhere to West Lothian Council policy.

Despite reminding all our families about this important safety notice there is still a minority of families who do not think this safety rule applies to them. We have also witnessed an increasing number of cars parking irresponsibly across resident access drives and over the zigzag lines which is dangerous and illegal.

Please don't be a selfish driver and think of the safety of everyone. **Please park sensibly and safely.**

Outdoor Classroom Day – Thursday 7 November

We are working on developing our outdoor areas and are looking for donations:

Wooden planks, guttering, tarpaulin, netting, slate and tiles, pebbles and wooden stumps.

If you can supply any of the above please contact the school office or speak with Mrs Kinnear.

Allergies

We have a number of children who have severe allergies including reaction to peanuts/nuts. This allergic reaction (anaphylactic shock) can occur through ingestion of peanut/nut products, cross contamination and breathing peanuts in the air. Therefore no peanut/nut products are allowed in school.

Thank you for helping us to keep every child safe.

Positive Relationship Policy

In collaboration with learners and staff we have reviewed our Positive Relationship Policy. Our key expectations have been shared across the school – SAFE, READY, RESPECT. Our positive behaviour approach is based on trauma informed practice and our use of Emotion Works to develop strong relationships with our learners. We have implemented a simple class visual to support learners – Ready to Learn/Good Day/Outstanding/Reflection/Consequence.

Learner Leadership

Following recent interviews we have successfully appointed our pupil leadership teams for this session.

Congratulations to:

Head Girl – Kaja Matuszek

Head Boy – John Frater

Deputy Head Girl – Alice Bell

Deputy Head Boy – Ross Courtney

Erskine – House Captain – Daniel Hay and Vice Captain – Leah Brown

Shairp – House Captain – Lee Irvine and Vice Captain – Daniel Curran

Stewart – House Captain – Rachel Currie and Vice Captain – Laurie Dall

Freskyn – House Captain – Elise Hunter and Vice Captain – Oliver Gardner

P7 Prefects have also been appointed and have eagerly embraced their leadership roles across the school.

House Points have been launched this session to encourage our learners to work collaboratively and winners are announced at Friday Assembly. We have consulted with all pupils to ensure rewards are relevant and sustainable. We also have a Class of the Week to recognise the achievement of our fabulous children.

Well done to all our learners who have enthusiastically engaged in this positive praise initiative.

Election Day

Due to Uphall Primary and ELC being used as a Polling Station for the community, please note Uphall Primary and ELC will **be closed to all pupils on Thursday 12 December.**

As always if you have any questions or concerns please don't hesitate to contact our school office.

Catriona Macrae (Head Teacher)

Uphall Parent Council

Thank you to our Parent Council for their commitment to supporting our school and organising the recent Halloween Disco and dress down mornings. Everyone is welcome to attend Parent Council meetings or volunteer to help at various events. Next event is our Christmas Fayre on Saturday 23rd November. Look out for further information....

Dates for Diary

Key Dates for 19/20

Dyslexia Awareness Week

4th – 8th November

Anti-Bullying Week

11th – 15th November

Children In Need

15th November

Book Week Scotland

18th – 22nd November

Christmas Fair

Saturday 23rd November

Christmas Nativity

11th/13th December

Christmas Parties

P1 – December

P3-2 – December

P5-4 – December

P7-6 – December

Christmas Pantomime

18th December

Christmas Holiday

21st December to 6th January

Pupils resume – 7th January

February Break

14th to 18th February

All resume – 19th February

Parent Consultations

19th March

Easter Holidays

6th April to 19th April

All resume – 20th April

P7 Leavers Assembly

Thursday 25th June

School Sports

Friday 5th June

End of Term Church Services

Friday 26th June

Please note some dates and times are subject to change.

**Visit our school glow
blog/website for up to
date information**

Pupil Equity Interventions

We asked our families to prioritise the five most important pupil equity interventions. Here is what you said:

1. **TARGETED APPROACHES TO LITERACY & NUMERACY**
2. **SOCIAL & EMOTIONAL WELLBEING**
3. **PROMOTING A HIGH QUALITY LEARNING EXPERIENCE**
4. **EARLY INTERVENTION AND PREVENTION**
5. **PROMOTING HEALTHY LIFESTYLES**
6. PARTNERSHIP WORKING
7. DIFFERENTIATED SUPPORT
8. USING EVIDENCE & DATA
9. PROFESSIONAL LEARNING AND LEADERSHIP
10. ENGAGING BEYOND THE SCHOOL
11. EMPLOYABILITY SKILLS
12. RESEARCH & EVALUATION TO MONITOR IMPACT



Next Steps:

- We will review our current interventions to reflect feedback from our families.
- We will further develop our curriculum to ensure all pupils benefit from learning experiences which embed identified interventions.
- Further develop a whole school nurturing approach

School Communication

We use various methods to communicate with our parents which include:

- School Glow Blog/Website/Twitter
- Groupcall - update office with mobile number
- Termly newsletter
- Class Assemblies
- Sharing Our Learning Sessions
- Parent Consultations

Please ensure the school office has your current mobile phone number. Make sure you don't miss any important communication from school!

Sharing Our Learning

This session you will have the opportunity to participate in learning chats with your child.

Here are the key dates for your diary:

Thursday 28th November

Thursday 6th February

Thursday 15th May



Learning Themes:

There will be various school events to recognise and celebrate the following initiatives.

Dyslexia Awareness Week - week beginning 4th November

Outdoor Learning Day - Thursday 7th November

Anti-bullying Week - week beginning 11th November

Children in Need - Friday 15th November

Scottish Book Week - week beginning 18th November

Outdoor Classroom Day - Thursday 7th November

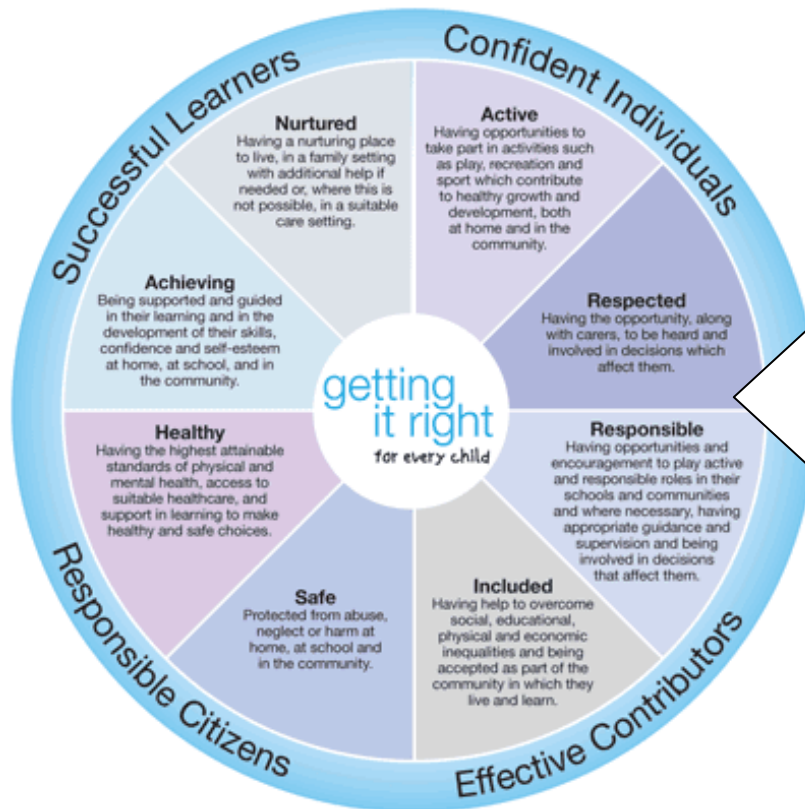
Outdoor Classroom Day is a global campaign to celebrate and inspire outdoor learning and play. Outdoor learning improves children's health, engages them with learning and leads to a greater connection with nature. Play not only teaches critical life skills such as resilience, teamwork and creativity, but is central to children's environment of childhood. Please ensure your child is appropriately dressed for the Scottish weather - waterproof coat!

Uphall Primary and ELC

Getting It Right For Every Child

Getting it right for every child (GIRFEC) is a consistent way for people to work with children and young people who need help and support. The approach helps practitioners focus on what makes a positive difference for children and young people - and how they can act to deliver these improvements. It ensures that anyone providing support puts the child or young person - and their family - at the centre.

West Lothian Council



These are the GIRFEC Wellbeing Indicators:

- Active
- Respected
- Responsible
- Included
- Safe
- Healthy
- Achieving
- Nurtured

This session we will be reviewing each Wellbeing Indicator to ensure a shared understanding across our school community. In collaboration with our learners we aim to create definitions for each indicator which reflects the unique context of Uphall Primary and ELC.

From here we need to ensure supports, resources and interventions are available to fully implement the Wellbeing Indicators for all our learners.

Learners will have the opportunity to self-report against each Wellbeing Indicator use glow 'eforms'. This online questionnaire allows us to gather information on learner wellbeing and proactively support and/or implement interventions to meet their needs.

We believe learner health and wellbeing is fundamental to attainment and achievement. Our learners need to feel, included, safe, nurtured, respected, responsible, active and healthy to fully engage in their learning.